

T1/E1 Multiplexer

Motorola Canopy™ Wireless Broadband

OVERVIEW

The Canopy T1/E1 Multiplexer is designed to replace leased lines in a broad array of applications which include:

- Branch office PBX and Ethernet connectivity
- Internet Service Providers can now offer both legacy voice and data connectivity
- Mobile base-station backhaul
- Central Office T1/E1 Extension
- Disaster recovery applications, such as Home-land security, for quickly establishing emergency T1/E1 voice and data networks
- Combined voice, data, video conferencing for corporations, local authorities, schools and in medical applications
- Long distance trunking / tie-line applications

FEATURES

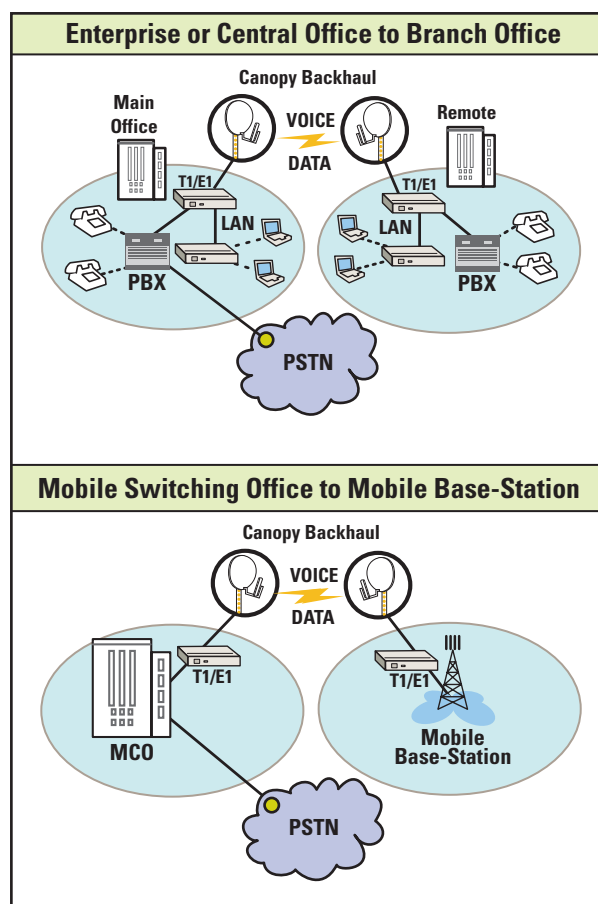
- **Highly scalable** multi-port design upgrades one-port at a time up to a total of 4 T1-'s or E1-'s
- **Dedicated T1/E1** service with remaining bandwidth available for data
- **Voice and LAN Data Aggregation** of one to four T1/E1-'s over Canopy backhaul family

- **Transparent T1/E1 line extension** over Ethernet (TDMoE)
- **Optimised for latency sensitive voice traffic** over the Canopy family of dedicated point-to-point wireless backhaul products
- **Table Top or 19" (48.26 cm) Rack Mountable**
- **Plug and Play Operation** via software configurable GUI for T1 or E1 configuration and port additions

BENEFITS

The economic benefits of deploying a Canopy T1/E1 solution include the following:

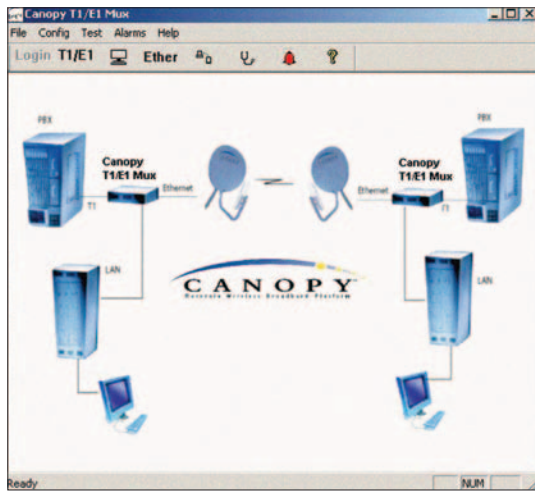
- **Operational savings** by replacing existing T1 or E1 leased lines with a wireless link
- **Lower capital investment** by deploying a scalable platform that grows with your needs



Reduce Cost by Extending Voice and Data Networks Wirelessly

The cost of leased lines is a substantial recurring expense for service providers and enterprise customers alike. The economic benefit of replacing leased lines with a Canopy T1/E1 Multiplexer translates into cost savings for the enterprise and a business opportunity for the service provider. The ease and speed of deploying the wireless T1/E1 solution across the Canopy family of backhaul solutions is a significant advantage over the time it takes to order and provision wired T1/E1 services.

By adding a Canopy T1/E1, business owners can add data connectivity and realize the full return on their investment within months. Metropolitan corporate PBX networks that are dependent on costly T1/E1 leased lines to connect campuses and suburban/rural locations, can now reap huge savings by establishing a wireless voice and data connection. In addition, service providers can open new markets to increase revenue by offering wireless T1/E1 replacement services along with LAN data to remote areas.



EQUIPMENT

Each end of a Motorola Canopy 10, 20, 45 or 300Mbps Backhaul link is connected via 10/100 Ethernet to the Canopy T1/E1 Multiplexer. The multiplexer unit is completely plug and play with Canopy backhaul solutions with an easy to use software GUI to change configuration options quickly and easily.

CANOPY T1/E1 MULTIPLEXER SPECIFICATIONS

Standards Compliance	CORE GR54, ATT Pub 62411, ANSI T1.408, TRY-TSY000499, ITU G.703, G.755, G.736, G.823, DSX-1, IEEE 802.3, DIX, FCC Part 15 Class A, ETSI EN301489, CSA 22.2 No 60950, UL60950
T1/E1 Port Impedance	Selectable 100, 110 & 120 ohms
Receiver Range	0 to 36 dB loss
Clock Mode	Configurable as Loopback or Recover
Loopback	Supports per channel local analogue, remote digital dual loopback modes
Encoding / Decoding	B8ZS or AMI
Line Buildout	0-133 ft, 133-266 ft, 266-399 ft, 399-533 ft, 533-655 ft
Alarms	Line Code Violation LOS (Loss of Signal) AIS (Alarm Indication Signal)
Protocol	IEEE 802.3 compatible
Interface	RS 232 Craft Port
System	Upgrade through Craft Port
Management / System	Command Line Interface (CLI), EMS (GUI)
Weight	1.5lbs (680 g)
Dimensions	Width 5.5" (14 cm), Height 1.5" (4 cm), Depth 7.4" (19 cm)
Primary Power	90-240 VAC (Converter supplied with global adapter plugs)
TDM	1 - 4 x T1/E1 Ports
Ethernet (In/Out)	100 BaseT Wirespeed full duplex
Altitude	14,760 ft (4500 m)
Humidity	95% Non Condensing
Operating Temperature	0° C to +45° C (32° F to +104° F)



For more information about how the Canopy system can extend your network and services, provide competitive advantage and outstanding ROI, call 001-800-795-1530 internationally or visit us at www.motorola.com/canopy

Motorola Ltd, Europe Middle East Africa, Jays Close, Viabes Industrial Estate, BASINGSTOKE, Hampshire RG22 4PD, UK

MOTOROLA and the Stylized M Logo are registered in the U.S. Patent and Trademark Office. All other product or service names are the property of their registered owners. © Motorola, Inc. 2005. MUX-SS-RE (07/05)

